



DVV CLARIFICATION

7.1.7 Percentage of Expenditure on green initiatives and waste management excluding salary components during the last five years.



Turn off lights



Turn off water



Turn off electronics

Win the big Waring

“Conserve Energy

To

Preserve Future...”

ENERGY POLICY

The energy policy of Kautilya Mahila Shikshak Prashikshan Mahavidyalaya, Kota College of Education for Women proposes actions to transform the way energy is consumed.

- **Electricity:** The institution strongly recommends the usage of LED lights in all the possible ventures of electrification for less and efficient consumption of electricity.
- **Renewable Energy:** The institution reduces the use of electrical energy through the use of solar power.
- **Cooking:** The institution uses LPG gas to reduce the use of cooking gas.
- **Transport:** The institution invests in the purchase of efficient buses for transport and encourages both the staff and students to use fuel less vehicles like bicycles/ebikes.
- **Building:** The institution enhances the availability of better insulation and construction materials in buildings and domestic appliances with energy efficiency.
- **Green Initiatives:** The institution invests in efficient drip irrigation for green initiatives. It encourages organic farming and planting trees in the campus. Bio-nets and vermicomposting in the institution reduces the use of fertilizers.
- **Education:** Awareness creation is an essential component of the energy policy of the institution.

OBJECTIVE OF ENERGY MANAGEMENT –

- To Minimize energy costs/waste without affecting production & quality.
- To minimize environmental effects.

ENERGY MANAGEMENT PRINCIPLE-

In our progressive Education Society B.Ed. College we follow some principal for energy management i.c. –

- Use of renewable energy
- Use of natural energy source whenever possible.

TYPES & USE OF ENERGY

Sr. No.	Types of Energy	Energy Uses
1	Electrical Energy	<ul style="list-style-type: none"> • For office. Staffroom & Kitchen (Lights & Fans) • Computer & related teaching instrument (LCD Projector) • Water purifier & pumping
2	Solar Energy	<ul style="list-style-type: none"> • Lights on campus
3	LPG	<ul style="list-style-type: none"> • In kitchen for food preparation.
4	Transport	<ul style="list-style-type: none"> • Staff and students to use fuel less vehicles like bicycles/ebikes.

ENERGY POLICY

Progressive Education Society's B.Ed College is one of leading teacher training college which is affiliated to Kota University, Kota.

Our college plays a very important role in the society to add more knowledge, awareness to the people. And we try to set a good example in front of society.

Our Mission for Energy Policy is -

- To provide an environment that enables the students to play a vital role in the energy conservation on the Kautilya Mahila Shikshak Prashikshan Mahavidyalaya, Kota Campus.
- To create awareness among students about energy conservation.
- Maximum use of natural lights.

Statement of Policy -

As a responsible Education institution, it is our responsibility to have a policy for the energy conservation. It will help us to embed efficiency and environmental awareness into our every-day activities, such as minimizing the energy consumption.

Kautilya Mahila Shikshak Prashikshan Mahavidyalaya, Kota policy always put effort in conveying the same to the students & Staff member. Our College's Energy policy is committed to protection and promotion of Energy Conservation.

Energy management Action Plan –

This we plan to achieve:

- We try to spread awareness on environment issues and an environment friendly life-style among the academic community and neighbourhood community through Day to Day activity.
 - Pay special attention to waste of energy.
 - Focus On renewable energy resources including solar Panel, rain water Harvesting etc. as much as possible. Try to Protect and promote diversity.
1. Personal computers, other office equipment, light, fans should be turned off when not in use.
 2. Natural light was provided in the classroom by keeping the windows constantly open.
 3. To reduce energy consumption, low energy consuming College can shift from traditional lights to modern CFLS and LED bulbs.
 4. Putting the computer in Power Saving mode will automatically turn off the screen when the computer is not in use.
 5. Use natural light.

6. Unplug LCD, computers, and smart boards when not in use.
7. Laptops and Desktop are part of teaching our methodologies; they must be checked when not in use.

Elimination of Energy wastage:

- ✓ Use of natural light.
- ✓ Use of Natural ventilation.
- ✓ Use of power saving mode for computers.


PRINCIPAL
KAUTILYA MAHILA SHIKSHAK
PRASHIKSHAN MAHAVIDYALAY
NAYAGAON, KOTA (RAJ.)





Kautilya

Mahila Shikshak Prashikshan Mahavidyalaya

NAAC ACCREDITED



Mall
PRINCIPAL
KAUTILYA MAHILA SHIKSHAK
PRASHIKSHAN MAHAVIDYALAY
NAYAGAON, KOTA (RAJ.)



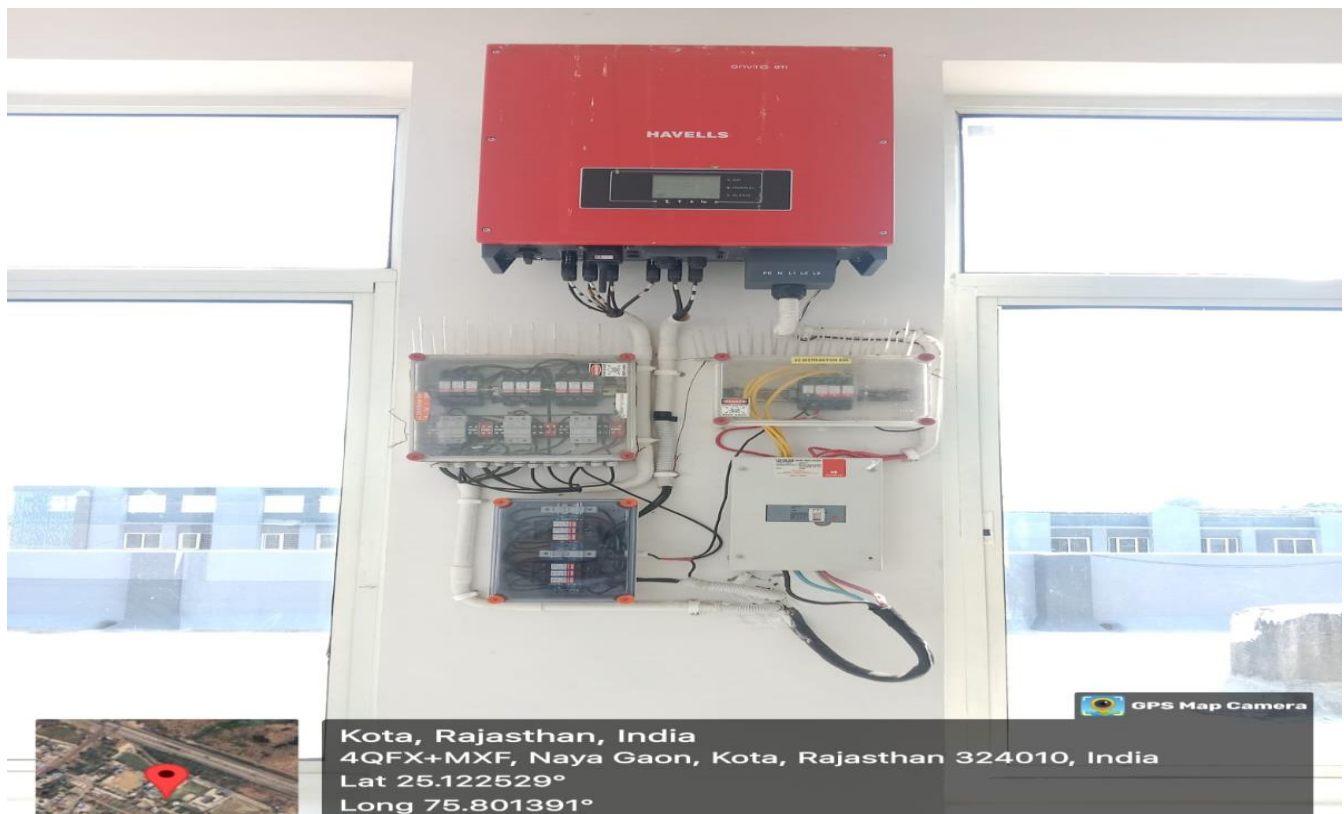
Kautilya

Mahila Shikshak Prashikshan Mahavidyalaya

NAAC ACCREDITED



Kota, Rajasthan, India
4QFX+MXF, Naya Gaon, Kota, Rajasthan 324010, India
Lat 25.12256°
Long 75.801512°



Kota, Rajasthan, India
4QFX+MXF, Naya Gaon, Kota, Rajasthan 324010, India
Lat 25.122529°
Long 75.801391°

Mall
PRINCIPAL
KAUTILYA MAHILA SHIKSHAK
PRASHIKSHAN MAHAVIDYALAY
NAYAGAON, KOTA (RAJ.)



Kautilya

Mahila Shikshak Prashikshan Mahavidyalaya

NAAC ACCREDITED



Kota, Rajasthan, India
4RC2+PH, Naya Gaon, Kota, Rajasthan 325003, India
Lat 25.122056°
Long 75.801468°



Kota, Rajasthan, India
4RC2+W85, Naya Gaon, Kota, Rajasthan 325003, India
Lat 25.122218°
Long 75.801117°

Mall

PRINCIPAL

KAUTILYA MAHILA SHIKSHAK
PRASHIKSHAN MAHAVIDYALAY
NAYAGAON, KOTA (RAJ.)



Kautilya

Mahila Shikshak Prashikshan Mahavidyalaya

NAAC ACCREDITED



Mall

PRINCIPAL

KAUTILYA MAHILA SHIKSHAK
PRASHIKSHAN MAHAVIDYALAY
NAYAGAON, KOTA (RAJ.)



Kautilya

Mahila Shikshak Prashikshan Mahavidyalaya

NAAC ACCREDITED

E-BIKE



Mall

PRINCIPAL

KAUTILYA MAHILA SHIKSHAK
PRASHIKSHAN MAHAVIDYALAY
NAYAGAON, KOTA (RAJ.)



Kautilya

Mahila Shikshak Prashikshan Mahavidyalaya

NAAC ACCREDITED



Mall

PRINCIPAL

KAUTILYA MAHILA SHIKSHAK
PRASHIKSHAN MAHAVIDYALAY
NAYAGAON, KOTA (RAJ.)



Kautilya

Mahila Shikshak Prashikshan Mahavidyalaya

NAAC ACCREDITED



Mall

PRINCIPAL

KAUTILYA MAHILA SHIKSHAK
PRASHIKSHAN MAHAVIDYALAY
NAYAGAON, KOTA (RAJ.)



Kautilya

Mahila Shikshak Prashikshan Mahavidyalaya

NAAC ACCREDITED



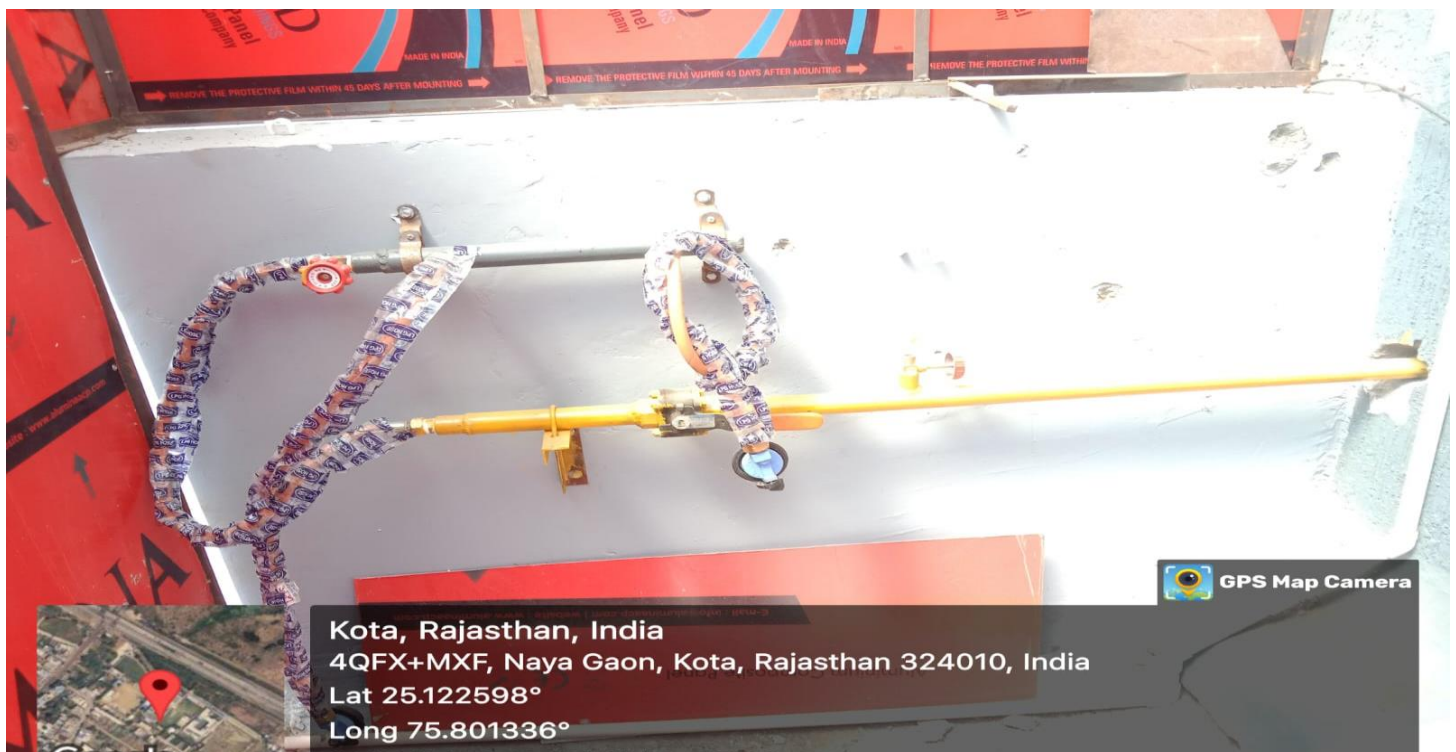
Mall
PRINCIPAL
KAUTILYA MAHILA SHIKSHAK
PRASHIKSHAN MAHAVIDYALAY
NAYAGAON, KOTA (RAJ.)



Kautilya

Mahila Shikshak Prashikshan Mahavidyalaya

NAAC ACCREDITED



Mall

PRINCIPAL
KAUTILYA MAHILA SHIKSHAK
PRASHIKSHAN MAHAVIDYALAY
NAYAGAON, KOTA (RAJ.)



Kautilya

Mahila Shikshak Prashikshan Mahavidyalaya

NAAC ACCREDITED



Mall

PRINCIPAL

KAUTILYA MAHILA SHIKSHAK
PRASHIKSHAN MAHAVIDYALAY
NAYAGAON, KOTA (RAJ.)

WASTE MANAGEMENT POLICY

The waste management policy of Kautilya Mahila Shikshak Prashikshan Mahavidyalaya, Kota College of Education for Women proposes the following practices inside its campus for waste management:

OUR MISSION FOR WASTE MANAGEMENT POLICY IS

- Ensuring that waste management is performed in accordance with all waste legislative requirements
- Promoting the student about environment values, ethics and awareness on campus
- Investing in the transformation of waste into value added products
- Segregation of waste into dry and wet waste from the separately allotted dustbins is done in strategic locations, thus maintaining the Campus clean
- Reduction the consumption of polythene
- Conversion management of organic waste into bio-compost

OBJECTIVE OF WASTE MANAGEMENT –

- Segregating solid waste on daily basis
- Reducing the quantity of solid waste disposed off in the campus
- Reusing and recycling the solid waste wherever possible
- Taking efforts to make the campus Plastic free
- Creating environmental consciousness through observation of various days

WASTE MANAGEMENT PRINCIPLE-

- 4Rs: Refuse, Reduce, Reuse & Recycle
- Segregation at source: Store organic or biodegradable and inorganic or non-biodegradable solid waste in different bins. Recycle of all the components with minimum labor and cost.

TYPES OF WASTE

- Commonly waste is classified into two types: Biodegradable and Non-biodegradable waste. These two kinds of wastes are explained below:

TYPES OF WASTE	
Biodegradable Waste	Non-biodegradable Waste
These are the wastes that come from our kitchen, canteen and it includes food remains, garden waste, etc. Biodegradable waste is also known as moist waste. This can be composted to obtain manure. Biodegradable wastes decompose itself over a period of time depending on the material.	These are the wastes which include old newspaper, broken glass pieces, plastics, etc. Non biodegradable waste is known as dry waste. Dry wastes can be recycled and can be reused. Non biodegradable wastes do not decompose by themselves and hence are major pollutants.



ACTION PLANS

Kautilya Mahila Shikshak Prashikshan Mahavidyalaya, Kota College has adopted specific action plans for managing various types of waste:

Paper Waste

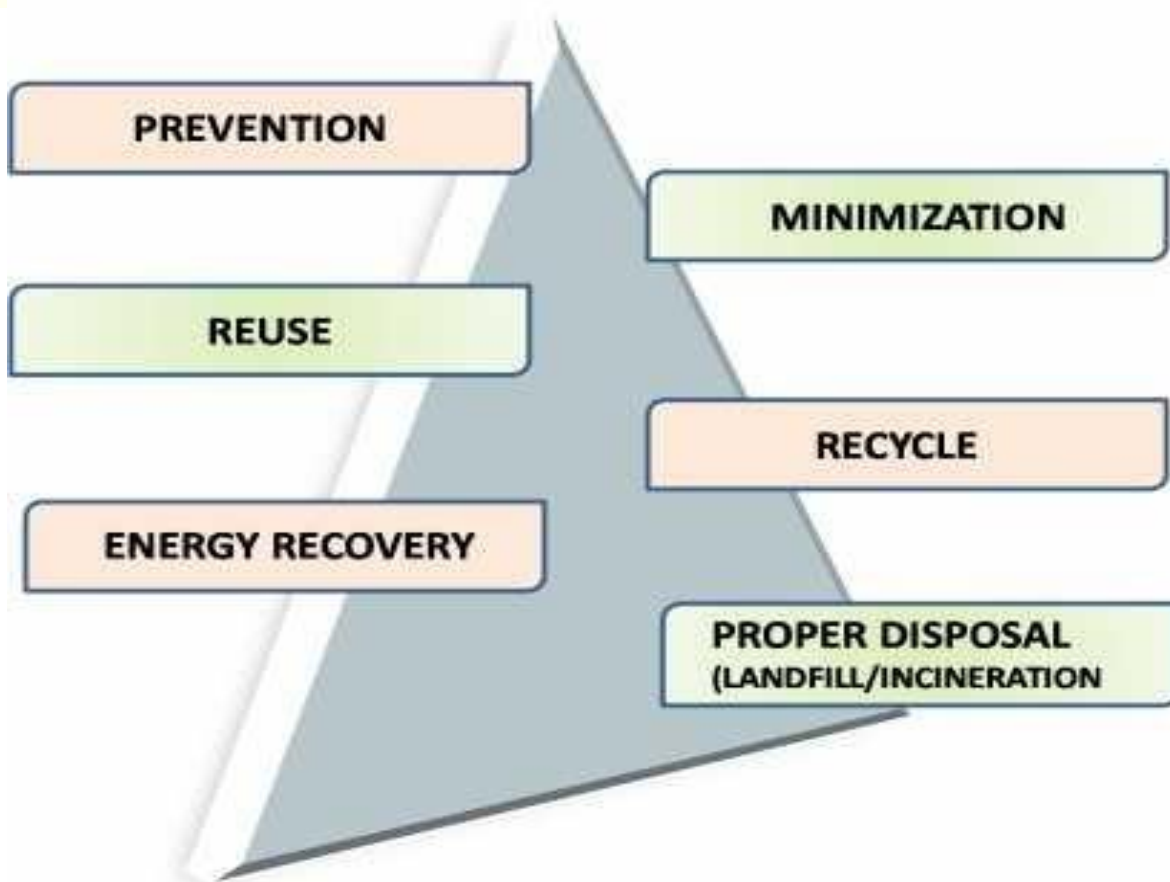
- Implement paper-saving initiatives.
- Encourage digital documentation and communication.
- Promote double-sided printing.

Solid Waste

- Implement waste segregation at source.
- Create collection points for biodegradable, non-biodegradable
- Utilize Manure pit for biodegradable waste.

Non-Biodegradable Waste

- Promote reusable glasses and cloth bags.
- Prohibit flex boards and encourage digital displays.
- Minimize plastic usage for student projects and food containers.



STEPS OF WASTE MANAGEMENT



FORMATION OF MANURE PIT



MOTIVATE TO USE CLOTH BAG

Mall
PRINCIPAL
KAUTILYA MAHILA SHIKSHAK
PRASHIKSHAN MAHAVIDYALAY
NAYAGAON, KOTA (RAJ.)



Mahila Shikshak Prashikshan Mahavidyalaya

NAAC ACCREDITED



AWARENESS RALLY ON POLYTHENE PROHIBITED

Mall
PRINCIPAL
KAUTILYA MAHILA SHIKSHAK
PRASHIKSHAN MAHAVIDYALAY
NAYAGAON, KOTA (RAJ.)



Mahila Shikshak Prashikshan Mahavidyalaya

NAAC ACCREDITED



Mall
PRINCIPAL
KAUTILYA MAHILA SHIKSHAK
PRASHIKSHAN MAHAVIDYALAY
NAYAGAON, KOTA (RAJ.)



Kautilya

Mahila Shikshak Prashikshan Mahavidyalaya

NAAC ACCREDITED

NAAC ACCREDITED



Kautilya

Mahila Shikshak Prashikshan Mahavidyalaya

Keep Our Surroundings Clean



NAAC ACCREDITED



Kautilya

Mahila Shikshak Prashikshan Mahavidyalaya

TO PROTECT EARTH FROM THE HARMFUL EFFECTS OF POLYTHENE

MILLIONS HAVE PLEDGED TO STOP USING PLASTIC BAGS DURING
THEIR ENTIRE LIFE AND SWITCH TO ECO FRIENDLY BAGS !



SAY NO TO  PLASTIC BAGS



BRING YOUR OWN BAG 

Mall
PRINCIPAL
KAUTILYA MAHILA SHIKSHAK
PRASHIKSHAN MAHAVIDYALAY
NAYAGAON, KOTA (RAJ.)



Kautilya

Mahila Shikshak Prashikshan Mahavidyalaya

NAAC ACCREDITED

NAAC ACCREDITED



Kautilya

Mahila Shikshak Prashikshan Mahavidyalaya



Mall

PRINCIPAL

KAUTILYA MAHILA SHIKSHAK
PRASHIKSHAN MAHAVIDYALAY
NAYAGAON, KOTA (RAJ.)

RAIN WATER HARVESTING

INTRODUCTION

Rainwater harvesting (RWH) is the process of collecting and storing rainwater for reuse before it reaches the ground. This technique has been employed for centuries and has gained renewed interest in recent years due to its potential to address water scarcity, reduce flood risks, and promote sustainable water management. Water is so essential for life that it's simply impossible to imagine life without water. India has 16% of the world's population and only 4% of the world's water resources are available for use, and that too are depleting rapidly. The demand for water is expected to grow from 40 billion cubic metres (bcm) currently to around 220 bcm in 2025. The uneconomical and unethical use of water by human beings is the sole reason for the exploitation and deterioration of this valuable natural resource. Thus, both quality and quantity of water are at stake and have to be taken care of. It's the moral duty and social responsibility of each individual and community as a whole to contribute to conserve water and rejuvenate the water resources.

In this direction, our institute has made efforts to ensure water conservation and water harvesting. The campaign has been channelized

with the Motto “Be Water Smart, Every Drop Counts” following the 3R principle - Reduce, Reuse and Recharge.

The primary goal of Kautilya Mahila Shikshak Prashikshan Mahavidyalaya, Kota is to provide safe and clean water in whole campus area. The college is implementing water efficient practices.

Student and staff engagement play a major role in our water sustainability strategies.

Reducing water consumption and protecting water quality shall be the key objectives of sustainable policy of Kautilya Mahila Shikshak Prashikshan Mahavidyalaya, Kota.

Goals and plans:

- Maximize water use efficiency and minimize wastage of water.
- All existing buildings to be used for rainwater harvesting.
- Promote investment in green infrastructure in all future development plans.
- Ensure awareness about the water conservation policy of the college among all the staff and students.
- Create awareness about the cost effectiveness of water conservation projects among students and local communities.
- Organise various outreach programmes under the leadership of NSS, Eco-club, Science-club and other student bodies.



- Promote students to monitor and collect information related to water bodies and their pollution of nearby areas.
- Inform, educate and increase the awareness regarding the importance of water to life and the need for conservation and efficient use of water.

IMPORTANCE OF RAINWATER HARVESTING

1. **Water Conservation:** RWH helps in conserving water by capturing rainwater that would otherwise be lost as runoff.
2. **Reduction of Urban Flooding:** By diverting rainwater into storage systems, RWH can mitigate flooding in urban areas.
3. **Groundwater Recharge:** Harvested rainwater can be used to recharge groundwater aquifers, supporting local ecosystems.
4. **Cost-Effective:** It can reduce water bills and lessen the demand on municipal water supplies.
5. **Environmental Benefits:** Reduces soil erosion and the risk of pollution by minimizing surface runoff.



METHODS OF RAINWATER HARVESTING

1. **Rooftop Harvesting:** Collecting rainwater from rooftops through gutters into storage tanks.
2. **Surface Harvesting:** Collecting runoff from land surfaces, typically through constructed ponds or reservoirs.
3. **Infiltration Pits:** Small pits or trenches designed to allow rainwater to seep into the ground, promoting groundwater recharge.

COMPONENTS OF A RAINWATER HARVESTING SYSTEM

- **Catchment Area:** The surface that collects rainwater (usually rooftops).
- **Downspouts:** Channels that direct rainwater from the catchment area to storage.
- **Storage Tanks:** Containers that store collected rainwater for future use.
- **Filtration System:** Filters that clean the water before it enters storage, ensuring it is safe for use.
- **Natural reservoirs:** The runoff has to be minimized adequate number of percolation pits & dispersion trenches behind the trees.

NAAC ACCREDITED



Kautilya

Mahila Shikshak Prashikshan Mahavidyalaya



Mall

PRINCIPAL

KAUTILYA MAHILA SHIKSHAK
PRASHIKSHAN MAHAVIDYALAY
NAYAGAON, KOTA (RAJ.)

NAAC ACCREDITED



Kautilya

Mahila Shikshak Prashikshan Mahavidyalaya



Mall
PRINCIPAL
KAUTILYA MAHILA SHIKSHAK
PRASHIKSHAN MAHAVIDYALAY
NAYAGAON, KOTA (RAJ.)

NAAC ACCREDITED



Kautilya

Mahila Shikshak Prashikshan Mahavidyalaya



Mall

PRINCIPAL

KAUTILYA MAHILA SHIKSHAK
PRASHIKSHAN MAHAVIDYALAY
NAYAGAON, KOTA (RAJ.)



ENVIRONMENT POLICY

Policy Objectives:

- To sensitize students towards a Clean, Green, and Sustainable Environment.
- To use LED bulbs and other energy-saving devices within the campus.
- Encourage the use of public transport for the conservation of non-renewable energy resources
- To make the campus plastic-free
- To make the campus lush green, thus to reduce the impact of urban heat island

Policy:

- To provide a clean and green environment in and around the campus, it has been decided to take sustainable initiatives for environmental protection and efficient energy usage.
- Efficient land use pattern to be implemented by optimizing green coverage
- The college has to adopt means for energy-saving technology and proper management for the segregation of wet and dry waste.
- Planting of trees to reduce heat consumption
- Sensitizing all the stakeholders to minimize the use of non-renewable energy resource
- To minimize the use of non-recyclable waste



- Students to be sensitized to reduce their plastic footprint
- Pedestrian-friendly pathway
- To introduce steps towards the use of less paper.

Policy Implementation: To achieve the objectives, the college has already implemented its environmental policy in the following areas:

- **Energy & Water Saving:** The staff members and students lead initiatives to save significant electricity and have developed a policy for reducing electricity consumption by using LEDs and replacing the old tube lights with LEDs. We display placards containing notifications regarding Switching off Lights & Fans in every class while leaving the classroom. Similarly, at every water connection point, we display a placard of 'Save Water'. In every classroom, all lights, fans, and switches have been prominently numbered to minimize the misuse of electricity.
- **Say No to Plastics:** Teaching and non-teaching staff members and students are fully aware of plastic pollution and are motivated to avoid the use of plastic. Students, teaching, and non-teaching staff practice minimum or no use of plastics in the campus. We display a banner & posters of 'Say No to Plastics' in the college campus. Similarly, in every class, we display placards containing notifications regarding 'Say No to Plastics', 'Stop Using Plastic', 'Save Environment' etc. The Institution also encourages the students to use Cotton Bags instead of plastic. The Institution also Celebrates Green Day to create awareness about Global Environmental Issues.



- **Tree Plantation:** College NSS, NCC Unit & Nature Club students Planted Medicinal Plants in the College Premises. Floral Green Bed has been prepared on both sides of the pathway from the entry gate. Composting has been initiated to prepare manure by recycling canteen waste for maintaining eco – friendly campus.
- **Green Audit & Environmental Audit:** college has been conducted Green Audit & Environmental Audit to safeguard the environment, energy conservation, use of renewable sources, etc. The college has been taken a maximum effort to maintain our campus eco-friendly.
- **Waste Management:** The College has installed compost pits for making compost from the garden waste such as leaves and grass clippings.

Mally
PRINCIPAL
KAUTILYA MAHILA SHIKSHAK
PRASHIKSHAN MAHAVIDYALAY
NAYAGODDA (RAI)

NAAC ACCREDITED



Kautilya

Mahila Shikshak Prashikshan Mahavidyalaya



The institution has received **Fifth Rank** in “All India Survey Non- residential College Swachhta Ranking 2018”, a national award by AISHE the ministry of HRD, Government of India, New Delhi.

Mall
Principal
KAUTILYA MAHILA SHIKSHAK
PRASHIKSHAN MAHAVIDYALAYA
NAYA KOTA, KOTA-324001

NAAC ACCREDITED



Kautilya

Mahila Shikshak Prashikshan Mahavidyalaya



The institution has received District Green Campion Certificate for Kota District for the Academic Year 2021-22 by Government of India/ Mahatma National Council of Rural Education/ Department of Higher Education/ Ministry of Education. The institution has successfully elevated the Swachhta Action Plan, adopted and implemented best practices in the areas of sanitation, Hygiene, waste Management, Water Management, Energy Management and greenery Management.

NAAC ACCREDITED



Kautilya

Mahila Shikshak Prashikshan Mahavidyalaya



NAAC ACCREDITED



Kautilya

Mahila Shikshak Prashikshan Mahavidyalaya



Mally
PRINCIPAL
KAUTILYA MAHILA SHIKSHAK
PRASHIKSHAN MAHAVIDYALAYA
NAYAGODDA (RAJ.)

NAAC ACCREDITED



Kautilya

Mahila Shikshak Prashikshan Mahavidyalaya



M. V. V.
PRINCIPAL
KAUTILYA MAHILA SHIKSHAK
PRASHIKSHAN MAHAVIDYALAYA
NAYAGODDA (MYSR)

NAAC ACCREDITED



Kautilya

Mahila Shikshak Prashikshan Mahavidyalaya



Mally
Principal
KAUTILYA MAHILA SHIKSHAK
PRASHIKSHAN MAHAVIDYALAYA
NAYAGODDA (S.A.)

NAAC ACCREDITED



Kautilya

Mahila Shikshak Prashikshan Mahavidyalaya



NAAC ACCREDITED



Kautilya

Mahila Shikshak Prashikshan Mahavidyalaya

**TO PROTECT EARTH FROM THE
HARMFUL EFFECTS
OF POLYTHENE**

**MILLIONS HAVE PLEDGED TO STOP USING PLASTIC BAGS DURING
THEIR ENTIRE LIFE AND SWITCH TO ECO FRIENDLY BAGS !**



SAY NO TO  PLASTIC BAGS



BRING YOUR OWN BAG 

Md. I.
PRINCIPAL
KAUTILYA MAHILA SHIKSHAK
PRASHIKSHAN MAHAVIDYALAYA
NAYAGODDA, RAJ.

NAAC ACCREDITED



Kautilya

Mahila Shikshak Prashikshan Mahavidyalaya



Mali
PRINCIPAL
KAUTILYA MAHILA SHIKSHAK
PRASHIKSHAN MAHAVIDYALAYA
NAYA GAON KOTA (R.A.)

Mobile :

Rangbari, Kota(Raj.) -324005

No : 093

Date : 29-06-2022

Date : 29-06-2022

THANK YOU

For VINAYAK GENERAL STORE

Proprietor

Mall

PRINCIPAL

KAUTILYA MAHILA SHIKSHAK
PRASHIKSHAN MAHAVIDYALAY
NAYAGAON, KOTA (RAJ.)

Mobile :

Rangbari, Kota(Raj.) -324005

No : 217

Date : 26-09-2022

Nayagaon

S.No.	Particulars	Qty	Rate	Amount Rs.	P.s.
01	Big Dustbin	10	725/-	7250/-	
02	Medium Dustbin	05	410/-	2050/-	
	Disc:			390/-	
E. & O.E	Total			8910/-	

For VINAYAK GENERAL STORE

Proprietary

PRINCIPAL
KAUTILYA MAHILA SHIKSHAK
PRASHIKSHAN MAHAVIDYALAY
NAYAGAON, KOTA (RAJ.)

Mobile :

Rangbari, Kota(Raj.) -324005

No : 226

Date : 27-09-2022

Date : 27-09-2022

THANK YOU

For VINAYAK GENERAL STORE

Proprietor

Mall

PRINCIPAL

KAUTILYA MAHILA SHIKSHAK
PRASHIKSHAN MAHAVIDYALAY
NAYAGAON, KOTA (RAJ.)

Mobile :

Rangbari, Kota(Raj.) -324005

Ms.

No: 401

Kautilya Mahila Shikshak Prashikshan Mahavidyalay

Date : 04-01-2023

Nayagaon

THANK YOU

For VINAYAK GENERAL STORE

Goods Once Sold Will not Be Taken Back.

Proprietor

Mall
PRINCIPAL
KAUTILYA MAHILA SHIKSHAK
PRASHIKSHAN MAHAVIDYALAY
NAYAGAON, KOTA (RAJ.)

Mobile :

Rangbari, Kota(Raj.) -324005

No : 122

Date : 09-07-2022

S.No.	Particulars	Qty	Rate	Amount Rs.	Ps.
01	Big Dustbin	09	725/-	6525	
02	Mug	02	90/-	180	
	Disc:			55	
E. & O E	Total			6650/-	

For VINAYAK GENERAL STORE

Proprietor

Math

PRINCIPAL

KAUTILYA MAHILA SHIKSHAK
PRASHIKSHAN MAHAVIDYALAY
NAYAGAON, KOTA (RAJ.)

JAIN AJIT & ASSOCIATES
CHARTERED ACCOUNTANTS
(Al.Com., Grad. I.C.W.A., F.C.A.)

148, 1st Floor Kaka Complex,
Kotri Road, Gumanpura, Kota-7
Phone : (0744) 2392041 [Fax]
Mobile : 9352601115
E-mail : ajitjainca@yahoo.com

Ref. No. :

Date :

TO WHOM SO EVER IT MAY CONCERN

4.2.4 Average annual expenditure for purchase of books, journals, and e-resources during the last five years (INR in Lakhs)

Year	Expenditure on the purchase of books in (INR in lakhs)	Expenditure on the purchase of journals in (INR in lakhs)	Expenditure on subscription to e-journals (INR in lakhs)	Expenditure on subscription to other e-resources (INR in lakhs)	Total
2022-23	60298	23420		0	83718
2021-22	1250	9630		0	10880
2020-21	9078	6850		0	15928
2019-20	14584	21220		0	35804
2018-19	6541	7170		0	13711

Date: 01/10/2024

Place: Kota

For Jain Ajit & Associates

Chartered Accountants

FRN: 035321C


(Ajit Jain)

Proprietor

M.No. 079093



UDIN No.:- 24079093BKHFYI3740

PRINCIPAL
KAUTILYA MAHILA SHIKSHAK
PRASHIKSHAN MAHAVIDYALAY
NAYAGAON, KOTA (RAJ.)

JAIN AJIT & ASSOCIATES
CHARTERED ACCOUNTANTS
(M.Com., Grad. I.C.W.A., F.C.A.)

148, 1st Floor Kaka Complex,
Kotri Road, Gumanpura, Kota-7
Phone : (0744) 2392041 [Fax]
Mobile : 9352601115
E-mail : ajitjainca@yahoo.com

Ref. No. :

Date :

TO WHOM SO EVER IT MAY CONCERN

4.1.3 Percentage of expenditure excluding salary for infrastructure augmentation during the last five years (INR in l)
4.1.3.1 Expenditure for infrastructure augmentation excluding salary during the last five years (INR in lakhs)

Year	Sl. No.	Items of infrastructure augmented	Expenditure
2022-23		13635906	1967160
		22 Rooms (Room No 38 to 59)+ 1 Girls Facility + Water Facility + 2nd Floor Front Elevation + Front Gate + Students Parking + Visitors Parking	
		Year Total	
2021-22		945981	539596
		5 Rooms (Room No 62 to 66)+ 1 Store Room + 1 Girls Facility + 1 Multi Purpose Hall + Solar Panel	
		Year Total	
2020-21		1032173	233082
		Administrative Interior + Renovation	
		Year Total	
2019-20		4029260	221578
		5 Rooms (Room No 33 to 37)+ 1 Store Room + Girls Facility + Stairs	
		Year Total	
2018-19		19735564	47429
		MID Room + Founder Room + Principal Room + Vice Principal Room + Procter Room + Accountant Room + Office + Pantry + 2 Staff Facility + 1 Girls Facility and 13 Rooms (Room No 19 to 30 + 1 Staff Room)	
		Year Total	39378884
		Total	42387729

Date: 04/10/2024

Place: Kota

For Jain Ajit & Associates

Chartered Accountants

FRN: 035321C



(Ajit Jain)

Proprietor

M.No. 079093



UDIN No.:- 24079093BKHFYI4415



PRINCIPAL
KAUTILYA MAHILA SHIKSHAK
PRASHIKSHAN MAHAVIDYALAY
NAYAGAON, KOTA (RAJ.)

JAIN AJIT & ASSOCIATES
CHARTERED ACCOUNTANTS
(M.Com., Grad. I.C.W.A., F.C.A.)

148, 1st Floor Kaka Complex,
Kotri Road, Gumanpura, Kota-7
Mobile : 9352601115
E-mail : ajitjainca@yahoo.com

Ref. No. :

Date :

TO WHOM SO EVER IT MAY CONCERN

It is certified on the basis of records produced to us that Kautilya Mahila Shikshak Prashikshan Mahavidyalaya (B.ed) and Kautilya Mahila Shikshak Prashikshan Mahavidyalaya (B.Sc- B.ed / B.A.- B.ed), Village Daulatganj, Nayagaon, MBS Road, Kota maintain their books of accounts separately.

Both the institutions are controlled and managed by Sugra Shikshan Sansthan. The total of incomes and expenditure of both the institutions combined as recorded in books of accounts is as follows:-

Sr. No.	Financial year	Total Income	Total Expenditure	Total Expenditure excluding salary	Profit & Loss
1	2018-19	11971121	8696621	2551952	3274500
2	2019-20	14668109	12007239	2507063	2660870
3	2020-21	10385993	7870522	2223103	2515471
4	2021-22	20485290	13673119	2297659	6812171
5	2022-23	24180277	16873078	3161291	7307199

This certificate is issued on the request of the members of the society.

Date: 02/10/2024

Place: Kota

For Jain Ajit & Associates

Chartered Accountants

FRN: 035321C

Ajit Jain

(Ajit Jain)

Proprietor

M.No. 079093



UDIN No.:- 24079093BKHFYJ5675

M. Raj
PRINCIPAL
KAUTILYA MAHILA SHIKSHAK
PRASHIKSHAN MAHAVIDYALAY
NAYAGAON, KOTA (RAJ.)

JAIN AJIT & ASSOCIATES
CHARTERED ACCOUNTANTS
(M.Com., Grad. I.C.W.A., F.C.A.)

148, 1st Floor Kaka Complex,
Kotri Road, Gumanpura, Kota-7
Phone : (0744) 2392041 [Fax]
Mobile : 9352601115
E-mail : ajitjainca@yahoo.com

Ref. No. :

Date :

TO WHOM SO EVER IT MAY CONCERN

It is certified on the basis of records produced to us that Sugra Shikshan Sansthan, Village Daulatganj, Nayagaon, MBS Road, Kota Vide PAN AAHTS3902N is a charitable organization and it is registered under the Income Tax Act, 1961 Vide Registration Number AAHTS3902NE20216 (Copy enclosed).

Sugra Shikshan Sansthan have following branches:

1. Kautilya Senior Secondary School
2. Kautilya College
3. Kautilya Mahila Shikshak Prashikshan Mahavidyalaya B. Ed, BSC- B.Ed, B.A.- B. Ed, D. EL Ed.

All the branches of the sansthan have kept their books of accounts separately but the main assets , accounts like Land & Building, Furniture, Fixtures A/c, Plant & Machinery, FDR with banks A/c and loan and borrowings for constructing the building A/c are maintained at head office level i.e. in the books of Sugra Shikshan Sansthan.

In last six years, Sugra Shikshan Sansthan has expended/invested following amount for constructing and maintenance of Building for Kautilya Mahila Shikshak Prashikshan Mahavidyalaya which was recorded in books of accounts of the Sugra Shikshan Sansthan:-

Sr. No.	Financial year	Construction of building	Repair & Maintenance of building
1	2018-19	1,97,35,564/-	47,429/-
2	2019-20	40,29,260/-	2,21,578/-
3	2020-21	10,32,173/-	2,33,082/-
4	2021-22	94,59,801/-	5,39,596/-
5	2022-23	1,36,35,906/-	19,67,160/-



Ajit

Mally

PRINCIPAL
KAUTILYA MAHILA SHIKSHAK
PRASHIKSHAN MAHAVIDYALAY
NAYAGAON, KOTA (RAJ.)

JAIN AJIT & ASSOCIATES
CHARTERED ACCOUNTANTS
(M.Com., Grad. I.C.W.A., F.C.A.)

148, 1st Floor Kaka Complex,
Kotri Road, Gumanpura, Kota-7
Phone : (0744) 2392041 [Fax]
Mobile : 9352601115
E-mail : ajitjainca@yahoo.com

Ref. No. :

Date :

6	2023-24	73,84,535/-	5,35,350/-
---	---------	-------------	------------

Sugra Shikshan Sansthan have not charged/recovered any rent from its branches for use by the branch.
This certificate is issued on the request of the members of the society.

Date: 01/10/2024

Place: Kota

For Jain Ajit & Associates

Chartered Accountants

FRN: 035321C

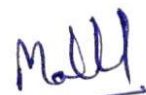

(Ajit Jain)

Proprietor

M.No. 079093



UDIN No.:- 24079093BKHFYI3531



PRINCIPAL
KAUTILYA MAHILA SHIKSHAK
PRASHIKSHAN MAHAVIDYALAY
NAYAGAON, KOTA (RAJ.)

GSTIN :08ABCPA5635L1ZP

GST-INVOICE

Mob.: 98290-93852

TAHERI SALES CORPORATION

मोदी पार्ट्स

Dealer : Leeva Submersible Pumps, Everwin Submersible Pumps

HI-BOND

Plot No. 45, Shopping Centre Kota-324007 (Raj.)

Super Suction Hose

Invoice No. 2955

Date : 30/04/22

M/s. Sugra Shikshan Sansthan
Kota

GSTIN No. Transporter.....

S.No.	Particulars	HSN CODE	Qty.	Rate	Amount	P.
1)	Self Priming Pump complete set Sharp 1.5HP 25. X 25. Sr. No: 2D1545 I Phone		1 set	9440	9440	-
Total Invoice Amount in Words : chq No: 837238 dt 30/04/22						
Total					9440	-
Less Discount					1011	90
Total Taxable Value					8428	60
Add : SGST@ 6 %					505	70
Add : CGST@ 6 %					505	70
Total Invoice Value					9440	2

Bank Details : Union Bank Of India
A/c. No. : 352601010297338
IFSC Code : UBIN0535265

Good once sold will not be taken back.
All Subject to Kota Jurisdiction

Pink Buyer, White Supplier

for : Taheri Sales Corporation

TAHERI SALES CORPORATION

मोदी पाईपस

Dealer : Leeva Submersible Pumps, Everwin Submersible Pumps

HI-BOND

Plot No. 45, Shopping Centre Kota-324007 (Raj.)

Super Suction Hose

Invoice No. 2381

Date : 25/09/21

M/s. Sugra Shikshan Sansthan
Nayagaon, Kota

GSTIN No.

Transporter.

S.No.	Particulars	HSN CODE	Qty.	Rate	Amount	P.
1)	Submersible Openwell Pump set 2HP 2 stage Hotech III Phase Sr.No: FJF1677		1 set	16700	16700	-
2)	Control Panel LAT III Phase		1 pc.	6600	6600	-
3)	Suction Hose 1½"		20 ft.	33	660	-
4)	Hose Nipple 1½"		2 pc.	38	76	-
5)	Hose Clip 1½"		2 pc.	15	30	-
	GST inclusive in 16700 @ 12% = 2004 7366 @ 18% = 1325/90				/	
Total Invoice Amount in Words : <u>credit</u>					Total	24,066 2
					Less Discount	3329 90
					Total Taxable Value	20736 10
Bank Details : Union Bank Of India A/c. No. : 352601010297338 IFSC Code : UBIN0535265					Add : SGST@6+9%	1664 95
					Add : CGST@6+9%	1664 95
					Total Invoice Value	24,066 2

Good once sold will not be taken back.
All Subject to Kota Jurisdiction

Pink Buyer, White Supplier

for : Taheri Sales Corporation

GSTIN :08ABCPA5635L1ZP

GST-INVOICE

Mob.: 98290-93852

TAHERI SALES CORPORATION

मोदी पाईप्स

Dealer : Leeva Submersible Pumps, Everwin Submersible Pumps

HI-BOND

Plot No. 45, Shopping Centre Kota-324007 (Raj.)

Super Suction Hose

Invoice No.

Date : 21/05/21

M/s.

2072 Sugra Shikshan Sansthan

NH27, Rawatbhata Road, Nayagaon Kota

GSTIN No.

Transporter

S.No.	Particulars	HSN CODE	Qty.	Rate	Amount	P.
1)	Submersible Pump complete set		1 set	42,700	42,700	-
	3HP X 15 stage flotech					
	Se. No: 54 No: FDF 784					
Total Invoice Amount in Words :		Total		42,700		1
		Less Discount		4575		2
		Total Taxable Value		38125		~
Bank Details : Union Bank Of India		Add : SGST@ 6 %		2287		50
A/c. No. : 352601010297338		Add : CGST@ 6 %		2287		50
IFSC Code : UBIN0535265		Total Invoice Value		42,700		-

Good once sold will not be taken back.

All Subject to Kota Jurisdiction

Pink Buyer, White Supplier

for : Taheri Sales Corporation